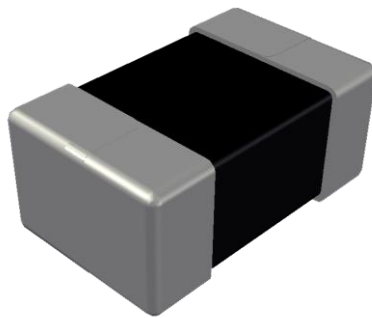


**ABCO Chip Ferrite Inductor**

## **LPP252012-2 Series**



5448-4, Sangdaewon-dong, Jungwon-gu,  
Seongnam-si, Gyeonggi-do, KOREA

Sales Dept. TEL:82-31-730-5082

FAX:82-31-730-5152

Eng. Dept. TEL:82-31-730-5034

FAX:82-31-730-5132

# LPP252012-2 Series



<http://www.abco.co.kr>

## ▣ Features

This specification applies to Molding power inductors

## ▣ Ordering Code

**LPP**   **252012**   **T** -   **1R0**   **M** -   **2**  
①                    ②                    ③                    ④                    ⑤                    ⑥

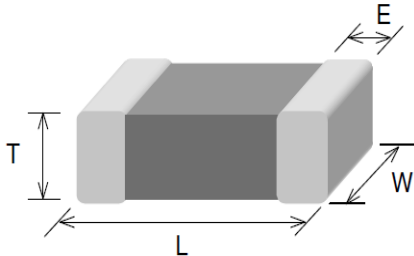
① Type		② Dimensions(mm)		③ Packing	
LPP		252012 : 2.5(L) × 2.0(W) × 1.2(T)		T	Taping Type.
④ Inductance(uH)		⑤ Tolerance		⑥ Internal Code	
1R0	1.00	M	±20%	2	

# LPP252012-2 Series



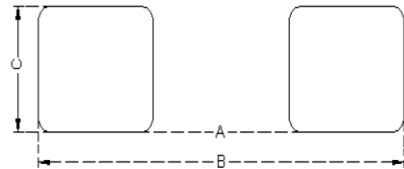
<http://www.abco.co.kr>

## ▣ Shapes and Dimensions



Series	L(mm)	W(mm)	T(mm)	E(mm)
LPP252012-2	2.5±0.3	2.0±0.3	1.2 Max.	0.6±0.3

## ▣ Recommended PC Board Pattern



A(mm)	B(mm)	C(mm)
1.2	2.8	2.3

## ▣ Electrical Characteristics

Part No.	Inductance	Test Freq.	Rdc(mΩ)	Isat(A)	Irms(A)
	(μH)	(MHz)	Max.(Typ.)	Max.(Typ.)	Max.(Typ.)
LPP252012T-1R0M-2	1.0±20%	2	42(35)	4.4(5.5)	3.6(4.1)
LPP252012T-2R2M-2	2.2±20%	2	83(74)	3.0(3.7)	2.5(2.9)

### 1. Testing Instrument

- L : Agilent E4991/HP4286A+16197A (or equivalent), 2MHz 0.2V
  - RDC : CHEN HWA502BC/HP4338B (or equivalent)
  - Isat : Agilent E4980A+HP42841A (or equivalent)
  - Irms : Agilent 6641 SYSTEM DC POWER SUPPLY (or equivalent)
2. Isat for Inductance drop 30% from its value without current.
  3. Irms for a 40°C temperature rise from 25°C ambient.
  4. Rated current: Isat or Irms, whichever is smaller
  5. Operate temp. range : -40°C ~ +125°C ( including self temp. rise)