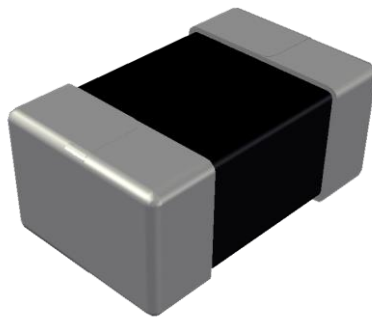


ABCO Chip Metal Inductor

LPP201208-J Series



5448-4, Sangdaewon-dong, Jungwon-gu,
Seongnam-si, Gyeonggi-do, KOREA

Sales Dept. TEL:82-31-730-5082

FAX:82-31-730-5152

Eng. Dept. TEL:82-31-730-5034

FAX:82-31-730-5132

LPP201208-J Series



<http://www.abco.co.kr>

▣ Features

This specification applies to Molding power inductors

▣ Ordering Code

LPP **201208** **T** - **R47** **M** - **J**
① ② ③ ④ ⑤ ⑥

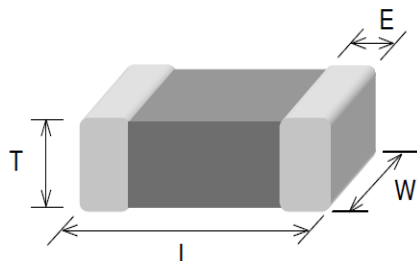
① Type		② Dimensions(mm)		③ Packing	
LPP		201208 : 2.0(L) × 1.25(W) × 0.8(T)		T	Taping Type.
④ Inductance(uH)		⑤ Tolerance		⑥ Internal Code	
R47	0.47	M	±20%	J	

LPP201208-J Series



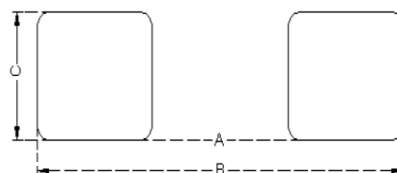
<http://www.abco.co.kr>

▣ Shapes and Dimensions



Series	L(mm)	W(mm)	T(mm)	E(mm)
LPP201208-J	2.0±0.2	1.25±0.2	0.8 Max	0.5±0.3

▣ Recommended PC Board Pattern



A(mm)	B(mm)	C(mm)
0.8~1.2	2.3~2.9	1.0~1.45

▣ Electrical Characteristics

Part No.	Inductance	Test Freq.	Rdc(mΩ)	Isat(A)	Irms(A)
	(μH)	(MHz)	Max.(Typ.)	Max.	Max.
LPP201208T-R47M-J	0.47+30% -10%	2	38(35)	3.0	3.1

1. Testing Instrument

- L : Agilent E4991/HP4286A+16197A (or equivalent), 2MHz 0.2V
- RDC : CHEN HWA502BC/HP4338B (or equivalent)
- Isat : Agilent E4980A+HP42841A (or equivalent)
- Irms : Agilent 6641 SYSTEM DC POWER SUPPLY (or equivalent)

2. Isat for Inductance drop 30% from its value without current.

3. Irms for a 40°C temperature rise from 25°C ambient.

4. Rated current: Isat or Irms, whichever is smaller

5. Operate temp. range : -40°C ~ +125°C (including self temp. rise)