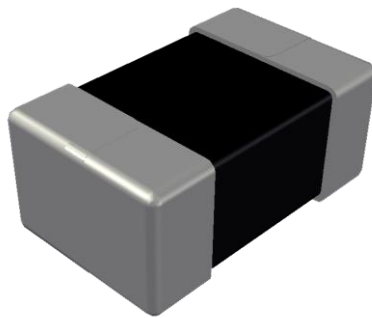


ABCO Chip Ferrite Inductor

LFMI252009-EP for Power Inductor Series



5448-4, Sangdaewon-dong, Jungwon-gu,
Seongnam-si, Gyeonggi-do, KOREA

Sales Dept. TEL:82-31-730-5082

FAX:82-31-730-5152

Eng. Dept. TEL:82-31-730-5053

FAX:82-31-730-5153

LFMI252009-EP Series



<http://www.abco.co.kr>

■ Features

High performance, low profile multilayer power inductors with superior DC superimposing characteristics and low DC resistance.

■ Applications

Small mobile devices such as smartphones, wifi module, lot module, SSD etc.

■ Ordering Code

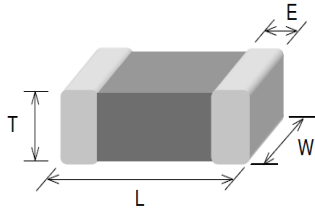
LFMI	252009	E	-	R47	M	-	EP
①	②	③		④	⑤		⑥
① Type		② Dimensions(mm)			③ Packing		
LFMI		252009 : 2.5(L) × 2.0(W) × 0.9(T)			E	Embossed Plastic Tape	
④ Inductance(uH)		⑤ Tolerance		⑥ Internal Code			
R47	0.47	M	±20%	EP			
1R0	1.0						

LFMI252009-EP Series



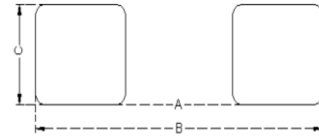
<http://www.abco.co.kr>

▣ Shapes and Dimensions



Series	L(mm)	W(mm)	T(mm)	E(mm)
LFMI252009-EP	2.50±0.20	2.00±0.20	0.90±0.10	0.50±0.30

▣ Recommended PC Board Pattern



A(mm)	B(mm)	C(mm)
1.2~1.5	3.5~4.0	1.5~2.0

▣ Electrical Characteristics

Part No.	Inductance	Test Freq.	SRF	DCR±25%	Rated Current
	(μH)	(MHz)	(MHz)	(Ω)	(mA)
LFMI252009E-R47M-EP	0.47±20%	1	100	0.040	1,800
LFMI252009E-1R0M-EP	1.00±20%	1	60	0.055	1,600
LFMI252009E-1R5M-EP	1.50±20%	1	50	0.070	1,500
LFMI252009E-2R2M-EP	2.20±20%	1	40	0.080	1,300
LFMI252009E-3R3M-EP	3.30±20%	1	30	0.100	1,200
LFMI252009E-4R7M-EP	4.70±20%	1	25	0.110	1,100
LFMI252009E-6R8M-EP	6.80±20%	1	25	0.200	1,100

1. Testing Instrument

- HP4291B RF IMPEDANCE / MATERIAL ANALYZER
- HP4338A/B MILLIOHMMETER

2. Operating temperature -40°C ~85°C

3. All test data is referenced to 25°C ambient. Test level 100mV

4. Apply DC 0.4~0.6A to chip for 1~3 sec. before to measure inductance.