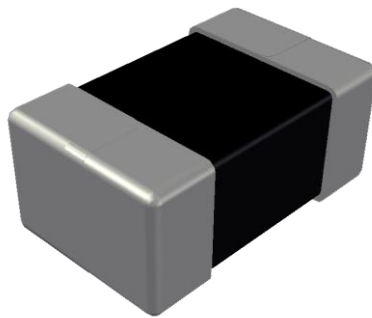


**ABCO Chip Ferrite Inductor**

## **LFMI201609-PP for Power Inductor Series**



5448-4, Sangdaewon-dong, Jungwon-gu,  
Seongnam-si, Gyeonggi-do, KOREA

Sales Dept. TEL:82-31-730-5082

FAX:82-31-730-5152

Eng. Dept. TEL:82-31-730-5053

FAX:82-31-730-5153

# LFMI201609-PP Series



<http://www.abco.co.kr>

## ■ Features

High performance, low profile multilayer power inductors with superior DC superimposing characteristics and low DC resistance.

## ■ Applications

Small mobile devices such as smartphones, wifi module, lot module, SSD etc.

## ■ Ordering Code

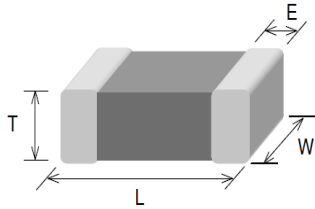
<b>LFMI</b>	<b>201609</b>	<b>E</b>	<b>-</b>	<b>R47</b>	<b>M</b>	<b>-</b>	<b>PP</b>
①	②	③		④	⑤		⑥
① Type		② Dimensions(mm)			③ Packing		
LFMI		201609 : 2.0(L) × 1.6(W) × 0.9(T)			E	Embossed Plastic Tape	
④ Inductance(uH)		⑤ Tolerance		⑥ Internal Code			
R47	0.47	M	±20%	PP			
2R2	2.2						

# LFMI201609-PP Series



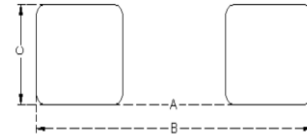
<http://www.abco.co.kr>

## ▣ Shapes and Dimensions



Series	L(mm)	W(mm)	T(mm)	E(mm)
LFMI201609-PP	2.00±0.20	1.60±0.20	0.90±0.10	0.50±0.30

## ▣ Recommended PC Board Pattern



A(mm)	B(mm)	C(mm)
1.0~1.2	3.0~4.0	1.0~1.5

## ▣ Electrical Characteristics

Part No.	Inductance	Test Freq.	SRF	DCR±25%	Rated Current
	( $\mu$ H)	(MHz)	(MHz)	( $\Omega$ )	(mA)
LFMI201609E-R47M-PP	0.47±20%	1	80	0.060	1,600
LFMI201609E-1R0M-PP	1.00±20%	1	70	0.085	1,400
LFMI201609E-1R5M-PP	1.50±20%	1	50	0.110	1,200
LFMI201609E-2R2M-PP	2.20±20%	1	50	0.110	1,200
LFMI201609E-4R7M-PP	4.70±20%	1	20	0.140	1,100

### 1. Testing Instrument

- HP4291B RF IMPEDANCE / MATERIAL ANALYZER
- HP4338A/B MILLIOHMMETER

### 2. Operating temperature -40°C ~85°C

### 3. All test data is referenced to 25°C ambient. Test level 100mV