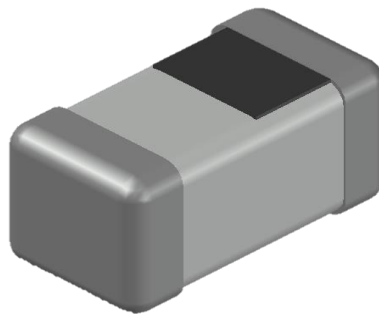


ABCO Chip Ceramic Inductor

LCMI160808-GN for Signal Inductor Series



5448-4, Sangdaewon-dong, Jungwon-gu,
Seongnam-si, Gyeonggi-do, KOREA

Sales Dept. TEL:82-31-730-5082

FAX:82-31-730-5152

Eng. Dept. TEL:82-31-730-5053

FAX:82-31-730-5153

LCMI160808-GN Series



<http://www.abco.co.kr>

■ Features

1. Particular ceramic material and coil structure provide high frequency application range up to 10GHz.
2. Small size and low profile.
3. Available in various sizes.
4. Excellent solderability and heat resistance.

■ Applications

RF and wireless communication, information technology equipment which includes computer, telecommunications, radar detectors, automotive electronics, cellular phones, pagers, audio equipment, PDAs, keyless remote system and low-voltage power supply modules.

■ Ordering Code

LCMI 160808 P - 10N J - GN

① ② ③ ④ ⑤ ⑥

| ① Type | |
|--------|--|
| LCMI | |

| ② Dimensions(mm) | |
|-----------------------------------|--|
| 160808 : 1.6(L) × 0.8(W) × 0.8(T) | |

| ③ Packing | |
|-----------|------------------------|
| P | Embossed Paper Tape |

| ④ Inductance(nH) | |
|------------------|-----|
| 1N0 | 1.0 |
| 10N | 10 |
| R10 | 100 |

| ⑤ Tolerance | |
|-------------|--------|
| C | ±0.3nH |
| J | ±5% |

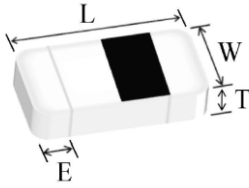
| ⑥ Internal Code |
|-----------------|
| GN |

LCMI160808-GN Series



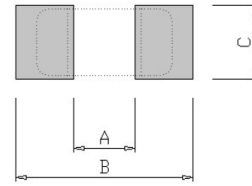
<http://www.abco.co.kr>

Shapes and Dimensions



| Series | L(mm) | W(mm) | T(mm) | E(mm) |
|---------------|-----------|-----------|-----------|-----------|
| LCMI160808-GN | 1.60±0.15 | 0.80±0.15 | 0.80±0.15 | 0.20~0.60 |

Recommended PC Board Pattern



| A(mm) | B(mm) | C(mm) |
|-------|---------|---------|
| 0.7 | 1.9~2.3 | 0.6~0.8 |

Electrical Characteristics

| Part No. | Inductance | | Q | Test Freq. | SRF | DCR Max. | Rated Current |
|---------------------|------------|-----------|-------|------------|----------|----------|---------------|
| | (nH) | Tolerance | (Min) | (MHz) | (MHz)Min | (Ω) | Max(mA) |
| LCMI160808P-1N0C-GN | 1.0 | ±0.3nH | 8 | 100 | 10,000 | 0.05 | 1,000 |
| LCMI160808P-1N2C-GN | 1.2 | ±0.3nH | 8 | 100 | 10,000 | 0.05 | 1,000 |
| LCMI160808P-1N5C-GN | 1.5 | ±0.3nH | 8 | 100 | 10,000 | 0.10 | 1,000 |
| LCMI160808P-1N8C-GN | 1.8 | ±0.3nH | 8 | 100 | 10,000 | 0.10 | 1,000 |
| LCMI160808P-2N2C-GN | 2.2 | ±0.3nH | 8 | 100 | 8,000 | 0.10 | 1,000 |
| LCMI160808P-2N7C-GN | 2.7 | ±0.3nH | 10 | 100 | 7,000 | 0.13 | 1,000 |
| LCMI160808P-3N3C-GN | 3.3 | ±0.3nH | 10 | 100 | 6,000 | 0.13 | 1,000 |
| LCMI160808P-3N9C-GN | 3.9 | ±0.3nH | 10 | 100 | 6,000 | 0.15 | 1,000 |
| LCMI160808P-4N7C-GN | 4.7 | ±0.3nH | 10 | 100 | 5,000 | 0.20 | 1,000 |
| LCMI160808P-5N6C-GN | 5.6 | ±0.3nH | 10 | 100 | 4,000 | 0.23 | 600 |
| LCMI160808P-6N8J-GN | 6.8 | ±5% | 10 | 100 | 4,000 | 0.25 | 600 |
| LCMI160808P-8N2J-GN | 8.2 | ±5% | 10 | 100 | 3,500 | 0.28 | 600 |
| LCMI160808P-10NJ-GN | 10 | ±5% | 12 | 100 | 3,400 | 0.30 | 600 |
| LCMI160808P-12NJ-GN | 12 | ±5% | 12 | 100 | 2,600 | 0.35 | 600 |
| LCMI160808P-15NJ-GN | 15 | ±5% | 12 | 100 | 2,300 | 0.40 | 600 |
| LCMI160808P-18NJ-GN | 18 | ±5% | 12 | 100 | 2,000 | 0.45 | 600 |
| LCMI160808P-22NJ-GN | 22 | ±5% | 12 | 100 | 1,600 | 0.50 | 600 |
| LCMI160808P-27NJ-GN | 27 | ±5% | 12 | 100 | 1,400 | 0.55 | 600 |
| LCMI160808P-33NJ-GN | 33 | ±5% | 12 | 100 | 1,200 | 0.60 | 600 |
| LCMI160808P-39NJ-GN | 39 | ±5% | 12 | 100 | 1,100 | 0.65 | 500 |
| LCMI160808P-47NJ-GN | 47 | ±5% | 12 | 100 | 900 | 0.70 | 500 |
| LCMI160808P-56NJ-GN | 56 | ±5% | 12 | 100 | 900 | 0.75 | 500 |
| LCMI160808P-68NJ-GN | 68 | ±5% | 12 | 100 | 700 | 0.85 | 400 |
| LCMI160808P-82NJ-GN | 82 | ±5% | 12 | 100 | 600 | 0.95 | 300 |
| LCMI160808P-R10J-GN | 100 | ±5% | 12 | 100 | 600 | 1.00 | 300 |
| LCMI160808P-R12J-GN | 120 | ±5% | 8 | 50 | 500 | 1.20 | 300 |
| LCMI160808P-R15J-GN | 150 | ±5% | 8 | 50 | 500 | 1.20 | 300 |
| LCMI160808P-R18J-GN | 180 | ±5% | 8 | 50 | 400 | 1.30 | 300 |
| LCMI160808P-R22J-GN | 220 | ±5% | 8 | 50 | 400 | 1.50 | 300 |
| LCMI160808P-R27J-GN | 270 | ±5% | 8 | 50 | 400 | 1.90 | 200 |