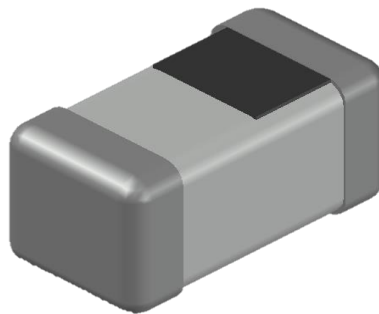


ABCO Chip Ceramic Inductor

LCMI060303-GN for Signal Inductor Series



5448-4, Sangdaewon-dong, Jungwon-gu,
Seongnam-si, Gyeonggi-do, KOREA

Sales Dept. TEL:82-31-730-5082

FAX:82-31-730-5152

Eng. Dept. TEL:82-31-730-5053

FAX:82-31-730-5153

LCMI060303-GN Series



<http://www.abco.co.kr>

■ Features

1. Particular ceramic material and coil structure provide high frequency application range up to 10GHz.
2. Small size and low profile.
3. Available in various sizes.
4. Excellent solderability and heat resistance.

■ Applications

RF and wireless communication, information technology equipment which includes computer, telecommunications, radar detectors, automotive electronics, cellular phones, pagers, audio equipment, PDAs, keyless remote system and low-voltage power supply modules.

■ Ordering Code

LCMI **060303** **P** - **7N5** **J** - **GN**

① ② ③ ④ ⑤ ⑥

① Type	
LCMI	

② Dimensions(mm)	
060303 : 0.6(L) × 0.3(W) × 0.3(T)	

③ Packing	
P	Embossed Paper Tape

④ Inductance(nH)	
0N3	0.3
1N0	1.0
10N	10

⑤ Tolerance	
A	±0.1nH
B	±0.2nH
C	±0.3nH
H	±3%
J	±5%

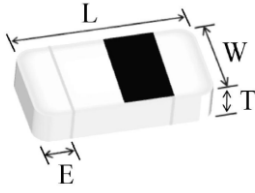
⑥ Internal Code
GN

LCMI060303-GN Series

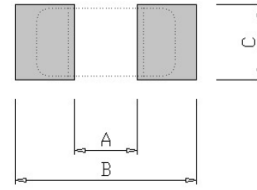


<http://www.abco.co.kr>

■ Shapes and Dimensions



■ Recommended PC Board Pattern



Series	L(mm)	W(mm)	T(mm)	E(mm)
LCMI060303-GN	0.60±0.03	0.30±0.03	0.30±0.03	0.10~0.20

A(mm)	B(mm)	C(mm)
0.2~0.3	0.8~0.9	0.2~0.3

■ Electrical Characteristics

Part No.	Inductance		Q	Test Freq.	SRF	DCR Max.	Rated Current
	(nH)	Tolerance	(Min)	(MHz)	(MHz)Min	(Ω)	Max(mA)
LCMI060303P-0N3A-GN	0.3	±0.1nH	4	100	10,000	0.07	850
LCMI060303P-0N4A-GN	0.4	±0.1nH	4	100	10,000	0.07	850
LCMI060303P-0N5A-GN	0.5	±0.1nH	4	100	10,000	0.08	800
LCMI060303P-0N6A-GN	0.6	±0.1nH	4	100	10,000	0.08	800
LCMI060303P-0N7A-GN	0.7	±0.1nH	4	100	10,000	0.09	750
LCMI060303P-0N8A-GN	0.8	±0.1nH	4	100	10,000	0.10	750
LCMI060303P-0N9A-GN	0.9	±0.1nH	4	100	10,000	0.10	750
LCMI060303P-1N0A,B,C-GN	1.0	±0.1, 0.2, 0.3nH	4	100	10,000	0.14	600
LCMI060303P-1N1A,B,C-GN	1.1	±0.1, 0.2, 0.3nH	4	100	10,000	0.14	600
LCMI060303P-1N2A,B,C-GN	1.2	±0.1, 0.2, 0.3nH	4	100	10,000	0.14	600
LCMI060303P-1N3A,B,C-GN	1.3	±0.1, 0.2, 0.3nH	4	100	10,000	0.14	600
LCMI060303P-1N4A,B,C-GN	1.4	±0.1, 0.2, 0.3nH	4	100	10,000	0.18	550
LCMI060303P-1N5A,B,C-GN	1.5	±0.1, 0.2, 0.3nH	4	100	10,000	0.18	550
LCMI060303P-1N6A,B,C-GN	1.6	±0.1, 0.2, 0.3nH	4	100	10,000	0.18	500
LCMI060303P-1N7A,B,C-GN	1.7	±0.1, 0.2, 0.3nH	4	100	10,000	0.19	500
LCMI060303P-1N8A,B,C-GN	1.8	±0.1, 0.2, 0.3nH	4	100	10,000	0.19	500
LCMI060303P-1N9A,B,C-GN	1.9	±0.1, 0.2, 0.3nH	4	100	10,000	0.20	450
LCMI060303P-2N0A,B,C-GN	2.0	±0.1, 0.2, 0.3nH	4	100	10,000	0.20	450
LCMI060303P-2N1A,B,C-GN	2.1	±0.1, 0.2, 0.3nH	4	100	10,000	0.20	450
LCMI060303P-2N2A,B,C-GN	2.2	±0.1, 0.2, 0.3nH	4	100	10,000	0.22	450
LCMI060303P-2N3A,B,C-GN	2.3	±0.1, 0.2, 0.3nH	4	100	10,000	0.22	450
LCMI060303P-2N4A,B,C-GN	2.4	±0.1, 0.2, 0.3nH	4	100	10,000	0.24	450
LCMI060303P-2N5A,B,C-GN	2.5	±0.1, 0.2, 0.3nH	4	100	10,000	0.24	450
LCMI060303P-2N6A,B,C-GN	2.6	±0.1, 0.2, 0.3nH	4	100	10,000	0.25	450
LCMI060303P-2N7A,B,C-GN	2.7	±0.1, 0.2, 0.3nH	5	100	10,000	0.25	450
LCMI060303P-2N9A,B,C-GN	2.9	±0.1, 0.2, 0.3nH	5	100	9,500	0.28	450
LCMI060303P-3N0A,B,C-GN	3.0	±0.1, 0.2, 0.3nH	5	100	9,500	0.28	450
LCMI060303P-3N1A,B,C-GN	3.1	±0.1, 0.2, 0.3nH	5	100	9,500	0.28	450
LCMI060303P-3N2A,B,C-GN	3.2	±0.1, 0.2, 0.3nH	5	100	9,500	0.30	450

LCMI060303-GN Series



<http://www.abco.co.kr>

■ Electrical Characteristics

Part No.	Inductance		Q	Test Freq.	SRF	DCR Max.	Rated Current
	(nH)	Tolerance	(Min)	(MHz)	(MHz)Min	(Ω)	Max(mA)
LCMI060303P-3N3A,B,C-GN	3.3	±0.1, 0.2, 0.3nH	5	100	9,500	0.30	450
LCMI060303P-3N4A,B,C-GN	3.4	±0.1, 0.2, 0.3nH	5	100	8,000	0.30	400
LCMI060303P-3N5A,B,C-GN	3.5	±0.1, 0.2, 0.3nH	5	100	8,000	0.30	400
LCMI060303P-3N6A,B,C-GN	3.6	±0.1, 0.2, 0.3nH	5	100	8,000	0.30	400
LCMI060303P-3N7A,B,C-GN	3.7	±0.1, 0.2, 0.3nH	5	100	8,000	0.30	400
LCMI060303P-3N8A,B,C-GN	3.8	±0.1, 0.2, 0.3nH	5	100	6,500	0.30	400
LCMI060303P-3N9A,B,C-GN	3.9	±0.1, 0.2, 0.3nH	5	100	6,500	0.30	400
LCMI060303P-4N3A,B,C-GN	4.3	±0.1, 0.2, 0.3nH	5	100	6,500	0.40	350
LCMI060303P-4N7A,B,C-GN	4.7	±0.1, 0.2, 0.3nH	5	100	6,500	0.40	350
LCMI060303P-5N1A,B,C-GN	5.1	±0.1, 0.2, 0.3nH	5	100	6,500	0.40	350
LCMI060303P-5N6A,B,C-GN	5.6	±0.1, 0.2, 0.3nH	5	100	6,000	0.40	350
LCMI060303P-6N2A,B,C-GN	6.2	±0.1, 0.2, 0.3nH	5	100	6,000	0.44	300
LCMI060303P-6N8H,J-GN	6.8	±3, 5%	5	100	5,400	0.50	300
LCMI060303P-7N5H,J-GN	7.5	±3, 5%	5	100	4,800	0.53	300
LCMI060303P-8N2H,J-GN	8.2	±3, 5%	5	100	4,800	0.55	250
LCMI060303P-9N1H,J-GN	9.1	±3, 5%	5	100	4,500	0.62	250
LCMI060303P-10NH,J-GN	10	±3, 5%	5	100	4,500	0.65	250
LCMI060303P-12NH,J-GN	12	±3, 5%	5	100	3,700	0.70	250
LCMI060303P-15NH,J-GN	15	±3, 5%	5	100	2,200	0.80	250
LCMI060303P-18NH,J-GN	18	±3, 5%	5	100	2,200	0.90	200
LCMI060303P-22NH,J-GN	22	±3, 5%	5	100	2,000	1.20	150
LCMI060303P-27NH,J-GN	27	±3, 5%	4	100	1,800	1.80	140
LCMI060303P-33NJ-GN	33	±5%	4	100	1,700	2.10	120
LCMI060303P-39NJ-GN	39	±5%	4	100	1,500	2.40	120

1. Testing Instrument

- Agilent E4991A RF IMPEDANCE
- Material Analyzer with fixture 16197A or Equivalent
- Agilent 4338B Milliohm meter

2. Operating temperature -40°C ~125°C

3. Test level 500mV.