

ABCO Bead COMPONENTS

EDMC100505-NQ Series



5448-4, Sangdaewon-dong, Jungwon-gu,
Seongnam-si, Gyeonggi-do, KOREA

Sales Dept. TEL:82-31-730-5082

FAX:82-31-730-5152

Eng. Dept. TEL:82-31-730-5053

FAX:82-31-730-5153

ABCO ELECTRONICS CO., LTD.

EDMC100505-NQ Series



<http://www.abco.co.kr>

▣ Features

1. This specification applies to MULTILAYER FERRITE CHIP BEADS
2. Operating temperature -55°C ~ +125°C. (Including self - temperature rise)

▣ Ordering Code

| | | | | | | | |
|-------------|---------------|----------|----------|------------|----------|----------|-----------|
| EDMC | 100505 | T | - | 100 | Y | - | NQ |
| ① | ② | ③ | | ④ | ⑤ | | ⑥ |

| | |
|--------|--|
| ① Type | |
| EDMC | |

| |
|-----------------------------------|
| ② Dimensions(mm) |
| 100505 : 1.0(L) × 0.5(W) × 0.5(T) |

| | |
|-----------|--------|
| ③ Packing | |
| T | TAPING |

| | |
|----------------|-----|
| ④ Impedance(Ω) | |
| 100 | 10 |
| 121 | 120 |

| |
|-------------|
| ⑤ Tolerance |
| Y : ±25% |

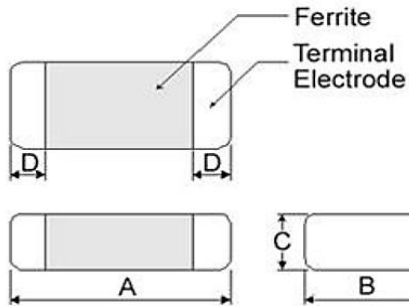
| |
|-----------------|
| ⑥ Internal Code |
| NQ |

EDMC100505-NQ Series

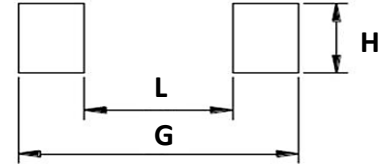


<http://www.abco.co.kr>

■ Shapes and Dimensions



■ Recommended PC Board Pattern



| Series | A(mm) | B(mm) | C(mm) | D(mm) |
|---------------|---------|---------|---------|-----------|
| EDMC100505-NQ | 1.0±0.1 | 0.5±0.1 | 0.5±0.1 | 0.25±0.10 |

| L(mm) | G(mm) | H(mm) |
|-------|---------|-------|
| 0.4 | 1.2~1.4 | 0.5 |

■ Electrical Characteristics

| Part Number | Impedance ($\Omega \pm 25\%$) | Test Frequency (MHz) | RDC (Ω) Max. | Rated Current(mA) |
|---------------------|------------------------------------|-------------------------|-----------------------------|------------------------------------|
| | | | | $\Delta T = 30^\circ\text{C}$ Max. |
| EDMC100505T-100Y-NQ | 10 | 100 | 0.10 | 500 |
| EDMC100505T-220Y-NQ | 22 | 100 | 0.25 | 400 |
| EDMC100505T-300Y-NQ | 30 | 100 | 0.25 | 400 |
| EDMC100505T-470Y-NQ | 47 | 100 | 0.30 | 400 |
| EDMC100505T-750Y-NQ | 75 | 100 | 0.30 | 400 |
| EDMC100505T-121Y-NQ | 120 | 100 | 0.40 | 350 |
| EDMC100505T-221Y-NQ | 220 | 100 | 0.60 | 200 |
| EDMC100505T-301Y-NQ | 300 | 100 | 0.80 | 200 |
| EDMC100505T-471Y-NQ | 470 | 100 | 1.10 | 200 |
| EDMC100505T-601Y-NQ | 600 | 100 | 1.20 | 200 |

1. Testing Instrument

- Impedance : HP4291A
- RDC :HP4338B or CHEN HWA 502

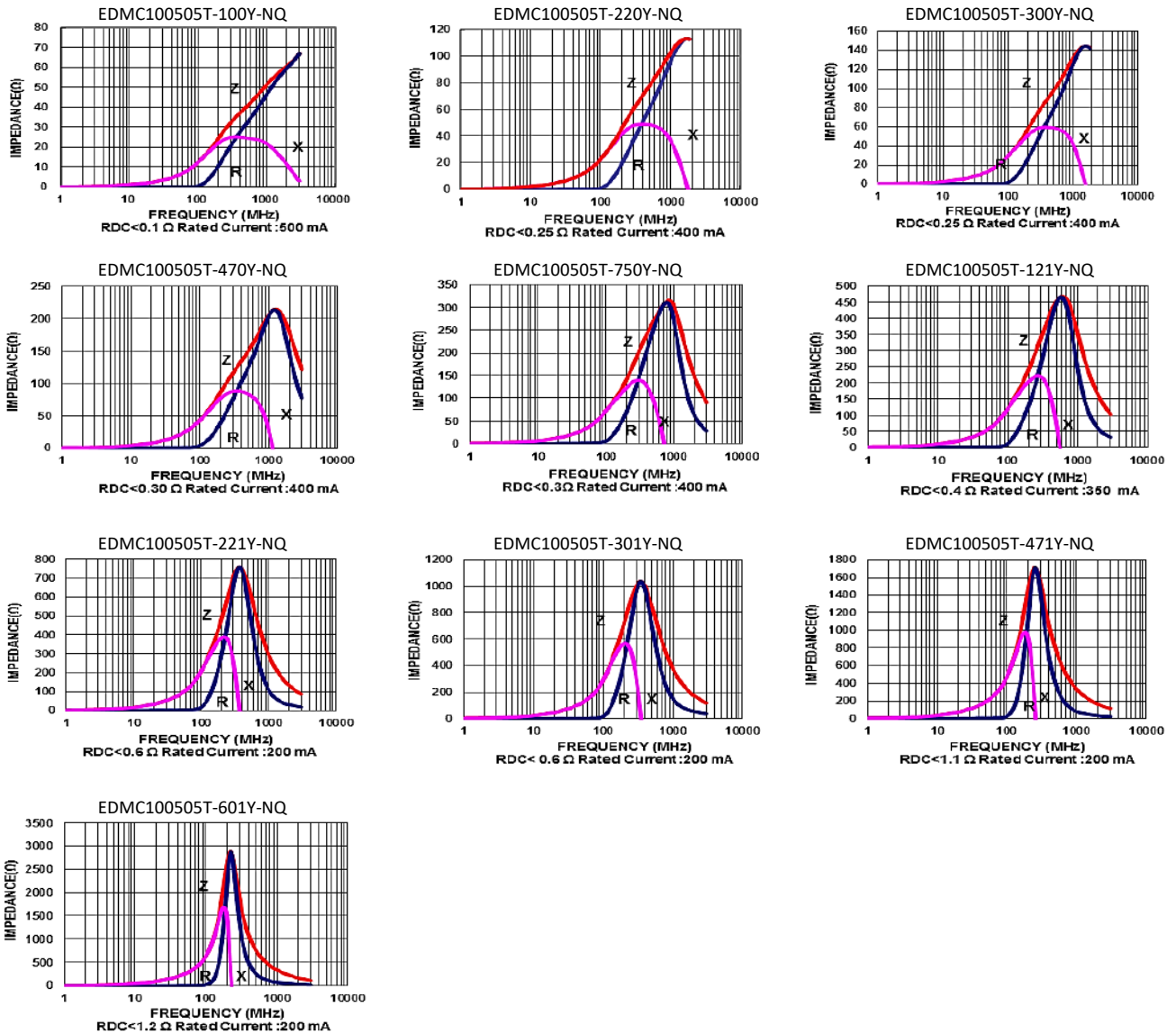
2. Rate Current : Applied the current to coils, the temperature rise shall not be more than 30°C

EDMC100505-NQ Series



<http://www.abco.co.kr>

Graph



Specifications given herein may be changed at any time without prior notice. Please confirm technical specifications before your order and/or use.