

EDMC100505-ASY Series



5448-4, Sangdaewon-dong, Jungwon-gu,
Seongnam-si, Gyeonggi-do, KOREA

Sales Dept. TEL:82-31-730-5082

FAX:82-31-730-5152

Eng. Dept. TEL:82-31-730-5053

FAX:82-31-730-5153

■ Features

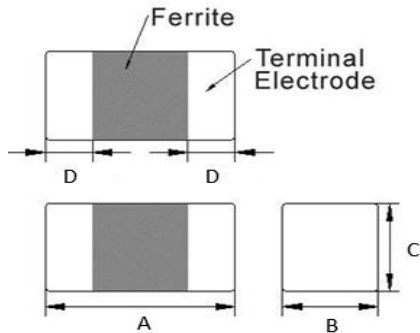
1. This specification applies to Multilayer Chip ferrite Bead for Automotive Electronics based on AEC-Q200 except for Power train and Safety.
2. Operating temperature -55°C ~ +125°C. (Including self - temperature rise)

■ Ordering Code

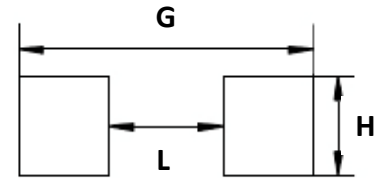
EDMC	100505	T	-	100	Y	-	ASY
①	②	③		④	⑤		⑥

① Type	② Dimensions(mm)	③ Packing						
EDMC	100505 : 1.0(L) × 0.5(W) × 0.5(T)	T TAPING						
④ Impedance(Ω)	⑤ Tolerance	⑥ Internal Code						
<table style="width: 100%; border-collapse: collapse;"> <tr> <td style="width: 50%; border-right: 1px solid black; text-align: center;">100</td> <td style="width: 50%; text-align: center;">10</td> </tr> <tr> <td style="border-right: 1px solid black; text-align: center;">101</td> <td style="text-align: center;">100</td> </tr> <tr> <td style="border-right: 1px solid black; text-align: center;">102</td> <td style="text-align: center;">1000</td> </tr> </table>	100	10	101	100	102	1000	Y : ±25%	ASY
100	10							
101	100							
102	1000							

Shapes and Dimensions



Recommended PC Board Pattern



Series	A(mm)	B(mm)	C(mm)	D(mm)
EDMC100505-ASY	1.0±0.1	0.5±0.1	0.5±0.1	0.25±0.1

L(mm)	G(mm)	H(mm)
0.4	1.2~1.4	0.5

Electrical Characteristics

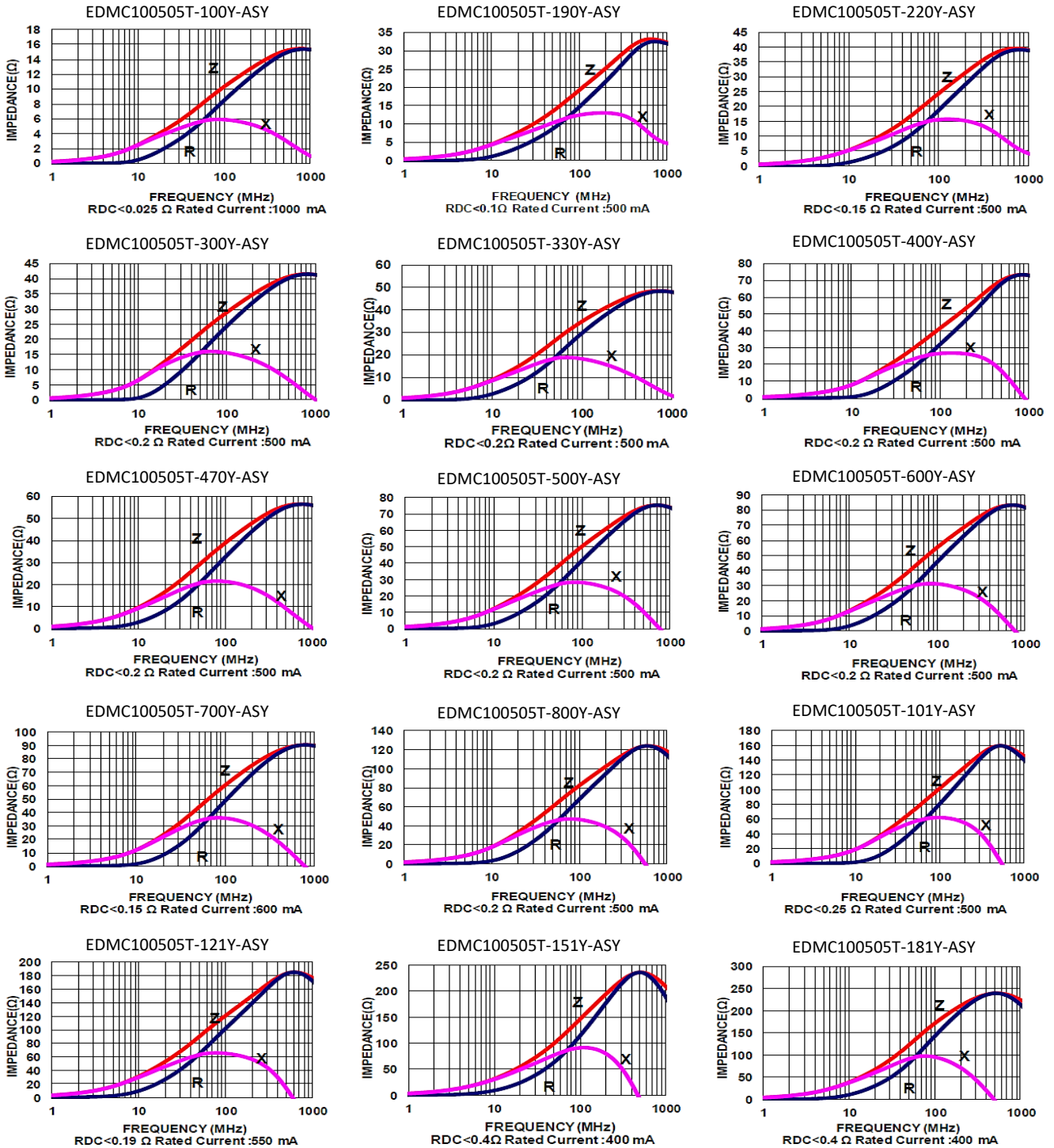
Part Number	Impedance ($\Omega \pm 25\%$)	Test Freq.	RDC(Ω) Max.	Rated Current(mA)
				$\Delta T = 30^\circ\text{C}$ Max.
EDMC100505T-100Y-ASY	10	100MHz, 200mV	0.025	1000
EDMC100505T-190Y-ASY	19	100MHz, 200mV	0.10	500
EDMC100505T-220Y-ASY	22	100MHz, 200mV	0.15	500
EDMC100505T-300Y-ASY	30	100MHz, 200mV	0.20	500
EDMC100505T-330Y-ASY	33	100MHz, 200mV	0.20	500
EDMC100505T-400Y-ASY	40	100MHz, 200mV	0.20	500
EDMC100505T-470Y-ASY	47	100MHz, 200mV	0.20	500
EDMC100505T-500Y-ASY	50	100MHz, 200mV	0.20	500
EDMC100505T-600Y-ASY	60	100MHz, 200mV	0.20	500
EDMC100505T-700Y-ASY	70	100MHz, 200mV	0.15	600
EDMC100505T-800Y-ASY	80	100MHz, 200mV	0.20	500
EDMC100505T-101Y-ASY	100	100MHz, 200mV	0.25	500
EDMC100505T-121Y-ASY	120	100MHz, 200mV	0.19	550
EDMC100505T-151Y-ASY	150	100MHz, 200mV	0.40	400
EDMC100505T-181Y-ASY	180	100MHz, 200mV	0.40	400
EDMC100505T-221Y-ASY	220	100MHz, 200mV	0.29	450
EDMC100505T-241Y-ASY	240	100MHz, 200mV	0.40	400
EDMC100505T-301Y-ASY	300	100MHz, 200mV	0.50	300
EDMC100505T-471Y-ASY	470	100MHz, 200mV	0.50	300
EDMC100505T-481Y-ASY	480	100MHz, 200mV	0.50	300
EDMC100505T-601Y-ASY	600	100MHz, 200mV	0.52	300
EDMC100505T-102Y-ASY	1000	100MHz, 200mV	0.65	300

1. Testing Instrument

- Impedance : HP4291A
- RDC : HP4338B or CHEN HWA 502

2. Rate Current : Applied the current to coils, the temperature rise shall not be more than 30°C

■ Graph



■ Graph

