

ABCO Bead COMPONENTS

AEC-Q200

EDMC100505-ANQ Series



5448-4, Sangdaewon-dong, Jungwon-gu,
Seongnam-si, Gyeonggi-do, KOREA

Sales Dept. TEL:82-31-730-5082

FAX:82-31-730-5152

Eng. Dept. TEL:82-31-730-5053

FAX:82-31-730-5153

ABCO ELECTRONICS CO., LTD.

■ Features

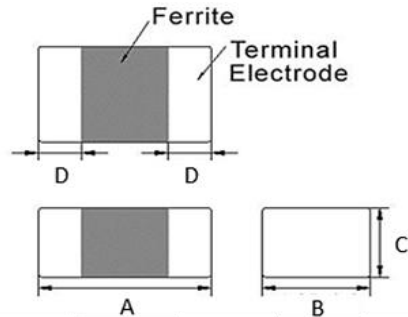
1. This specification applies to Multilayer Chip ferrite Bead for Automotive Electronics based on AEC-Q200 except for Power train and Safety.
2. Operating temperature -55°C ~ +125°C. (Including self - temperature rise)

■ Ordering Code

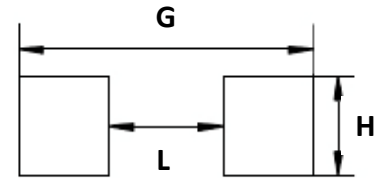
EDMC	100505	T	-	100	Y	-	ANQ
①	②	③		④	⑤		⑥

① Type	② Dimensions(mm)	③ Packing				
EDMC	100505 : 1.0(L) × 0.5(W) × 0.5(T)	<table style="width: 100%; border-collapse: collapse;"> <tr> <td style="border-right: 1px solid black; padding: 5px;">T</td> <td style="padding: 5px;">TAPING</td> </tr> </table>	T	TAPING		
T	TAPING					
④ Impedance(Ω)	⑤ Tolerance	⑥ Internal Code				
<table style="width: 100%; border-collapse: collapse;"> <tr> <td style="border-right: 1px solid black; padding: 5px;">100</td> <td style="padding: 5px;">10</td> </tr> <tr> <td style="border-right: 1px solid black; padding: 5px;">121</td> <td style="padding: 5px;">120</td> </tr> </table>	100	10	121	120	Y : ±25%	ANQ
100	10					
121	120					

■ Shapes and Dimensions



■ Recommended PC Board Pattern



Series	A(mm)	B(mm)	C(mm)	D(mm)
EDMC100505-ANQ	1.0±0.1	0.5±0.1	0.5±0.1	0.25±0.1

L(mm)	G(mm)	H(mm)
0.4	1.2~1.4	0.5

■ Electrical Characteristics

Part Number	Impedance ($\Omega \pm 25\%$)	Test Freq.	RDC(Ω) Max.	Rated Current(mA)
				$\Delta T = 30^\circ\text{C}$ Max.
EDMC100505T-100Y-ANQ	10	100MHz, 200mV	0.10	500
EDMC100505T-470Y-ANQ	47	100MHz, 200mV	0.30	400
EDMC100505T-750Y-ANQ	75	100MHz, 200mV	0.30	400
EDMC100505T-121Y-ANQ	120	100MHz, 200mV	0.40	350
EDMC100505T-221Y-ANQ	220	100MHz, 200mV	0.60	200
EDMC100505T-601Y-ANQ	600	100MHz, 200mV	1.20	200

1. Testing Instrument

- Impedance : HP4291A
- RDC :HP4338B or CHEN HWA 502

2. Rate Current : Applied the current to coils, the temperature rise shall not be more than 30°C

■ Graph

