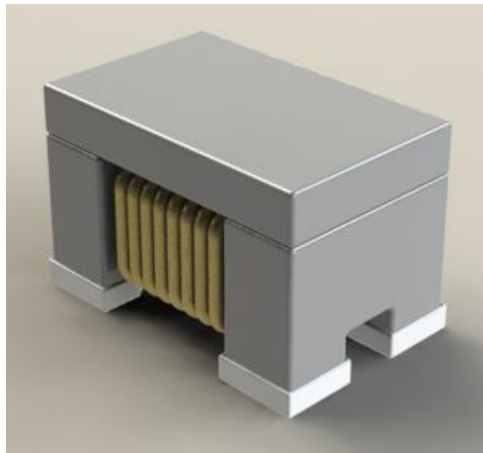


ABCO EMC COMPONENTS

AEC-Q200

Common Mode Filter ECTA43P2 Series



5448-4, Sangdaewon-dong, Jungwon-gu,
Seongnam-si, Gyeonggi-do, KOREA

Sales Dept. TEL:82-31-730-5083

FAX:82-31-730-5152

Eng. Dept. TEL:82-31-730-5034

FAX:82-31-730-5132

ABCO ELECTRONICS CO., LTD.

▣ **Features**

1. High common mode impedance at high frequency cause excellent noise suppression performance.
2. 100% Lead(Pb) & Halogen-Free and RoHS compliant.
3. High reliability -Reliability tests comply with AEC-Q200
4. Operating temperature -40~+125°C (Including self - temperature rise)

▣ **Ordering Code**

ECTA 43 P2 - 101

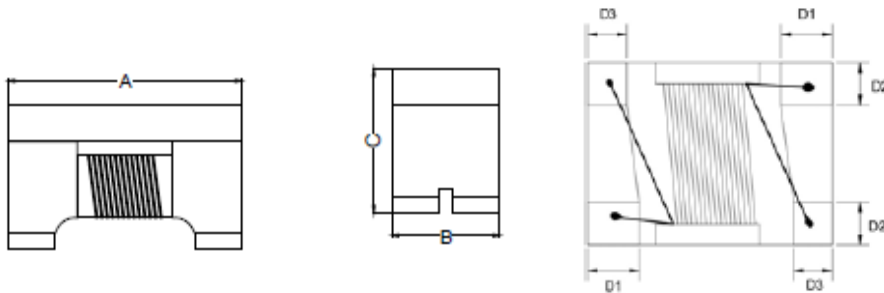
① ② ③ ④

① Series name	② Dimensions(mm)	③ Number of Lines	
ECTA	43 : 4.5(L) × 3.2(W)	P2	2Lines

④ Inductance(μH)	
510	51
101	100

▣ Shapes and Dimensions

Unit: mm



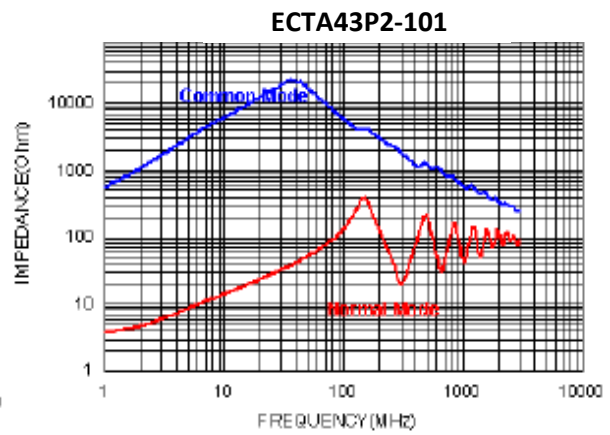
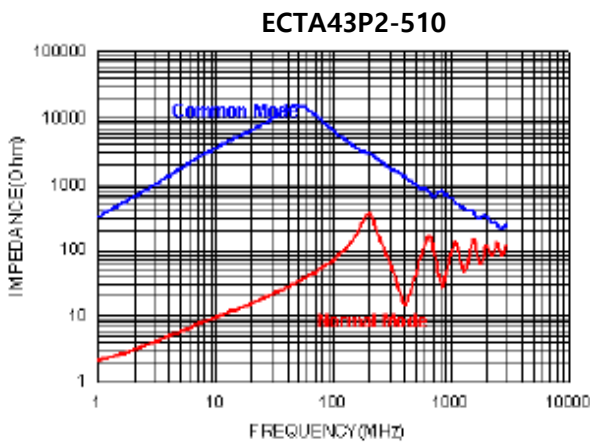
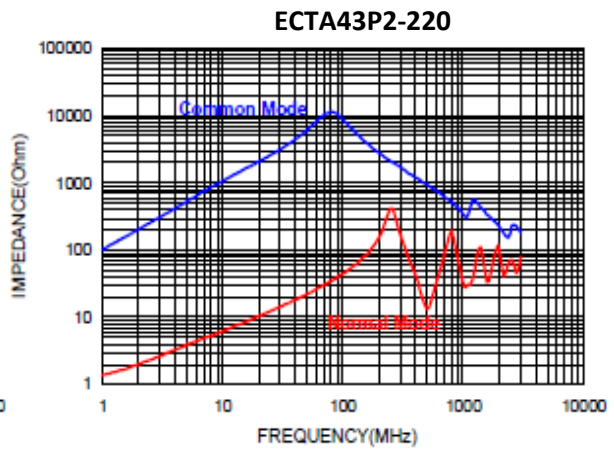
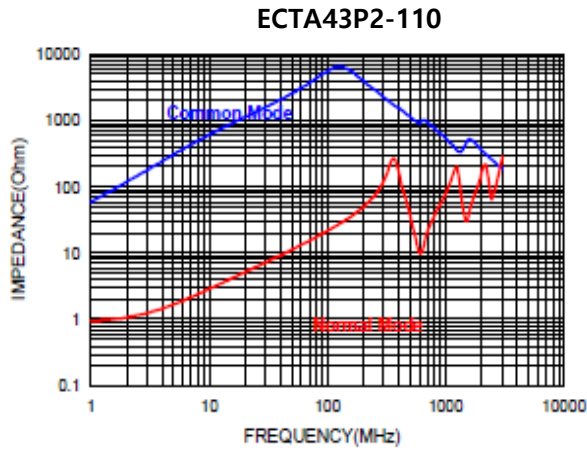
Series	A	B	C	D1	D2	D3
ECTA43P2	4.5±0.2	3.2±0.2	2.8±0.2	0.75±0.2	0.85±0.2	0.60±0.2

▣ Electrical Characteristics

Part Number	Common mode Impedance (Ω)		Inductance (μH) +50/-30%	DC Resistance (Ω) Max.	Rated Current (mA)	Rated Volt. (Vdc)	IR (MΩ) Min.
	300 Min.	600 typ.					
ECTA43P2-110	300 Min.	600 typ.	11	0.6	360	50	10
ECTA43P2-220	500 Min.	1200 typ.	22	1.0	310	50	10
ECTA43P2-510	1000 Min.	2800 typ.	51	1.0	230	50	10
ECTA43P2-101	2000 Min.	5800 typ.	100	2.0	200	50	10

* Test Frequency : Inductance 100kHz/0.1V

■ Typical Impedance v.s. Frequency Curve



■ Schematic Diagram

