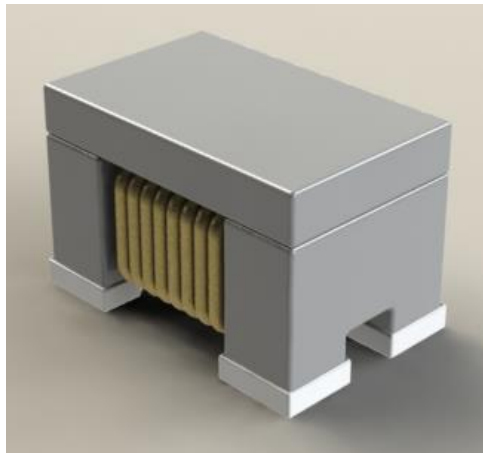


ABCO EMC COMPONENTS

Common Mode Filter **ECTA32P2-N Series**



5448-4, Sangdaewon-dong, Jungwon-gu,
Seongnam-si, Gyeonggi-do, KOREA

Sales Dept. TEL:82-31-730-5083

FAX:82-31-730-5152

Eng. Dept. TEL:82-31-730-5053

FAX:82-31-730-5153

ABCO ELECTRONICS CO., LTD.

ECTA32P2-N Series



<http://www.abco.co.kr>

■ Features

1. High common mode impedance at high frequency cause excellent noise suppression performance.
2. 100% Lead(Pb) & Halogen-Free and RoHS compliant.
3. Operating temperature -40~+150°C (Including self - temperature rise)

■ Ordering Code

ECTA **32** **P2** - **510** - **N**

① ② ③ ④ ⑤

① Series name	② Dimensions(mm)	③ Number of Lines	
ECTA	32 : 3.2(L) × 2.5(W)	P2	2Lines

④ Inductance(μH)		⑤ Internal Code
110	11	N
101	100	

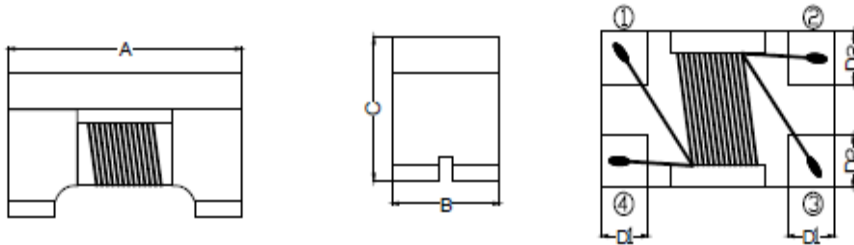
ECTA32P2-N Series



<http://www.abco.co.kr>

▣ Shapes and Dimensions

Unit: mm



Series	A	B	C	D1	D2
ECTA32P2-N	3.3±0.2	2.5±0.2	2.5 Max.	0.55±0.15	0.75±0.20

▣ Electrical Characteristics

Part Number	Common mode Impedance(Ω)		Inductance(μH) +50/-30%	DC Resistance (Ω) Max.	Rated Current (mA)	Rated Volt. (Vdc)	IR (MΩ) min
	min.	typ.					
ECTA32P2-110-N	300	550	11	0.4	300	80	10
ECTA32P2-220-N	500	1100	22	0.5	250	80	10
ECTA32P2-510-N	1000	2600	51	0.7	200	80	10
ECTA32P2-101-N	2200	5100	100	1.5	150	80	10

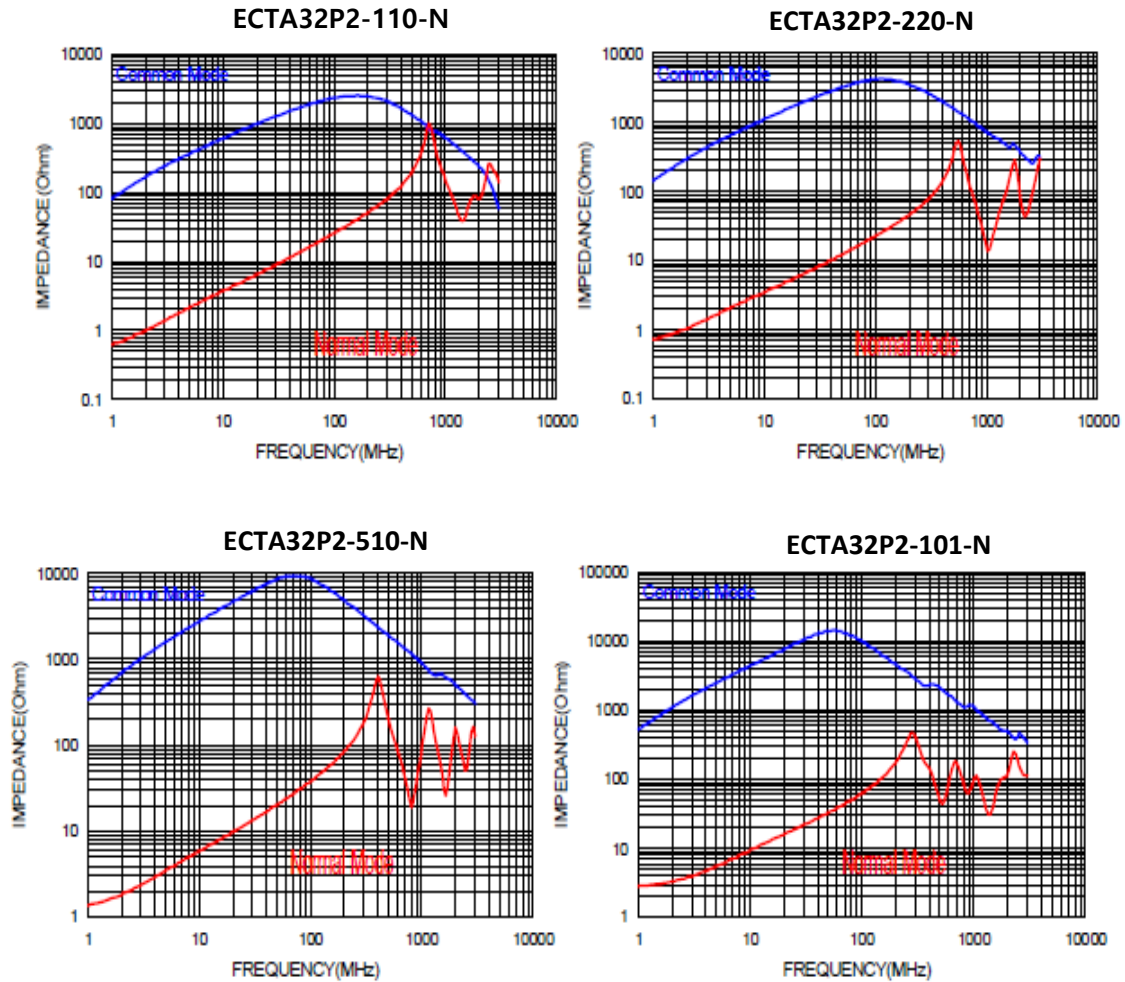
* Test Frequency : Impedance 10MHz, Inductance 100kHz/0.1V

ECTA32P2-N Series



<http://www.abco.co.kr>

Typical Impedance v.s. Frequency Curve



Schematic Diagram

