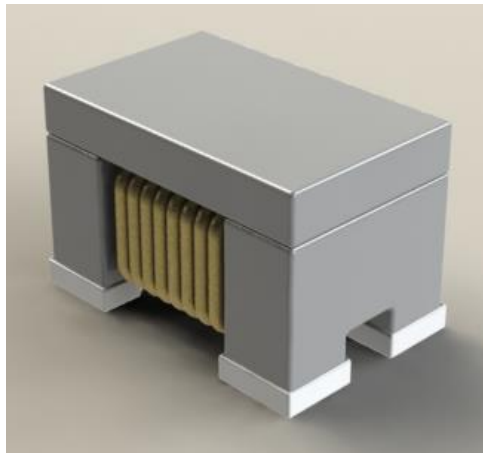


**ABCO EMC COMPONENTS**

**AEC-Q200**

## **Common Mode Filter** **ECTA32P2-AS Series**



5448-4, Sangdaewon-dong, Jungwon-gu,  
Seongnam-si, Gyeonggi-do, KOREA

Sales Dept. TEL:82-31-730-5083

FAX:82-31-730-5152

Eng. Dept. TEL:82-31-730-5053

FAX:82-31-730-5153

---

**ABCO ELECTRONICS CO., LTD.**

▣ **Features**

1. High common mode impedance at high frequency cause excellent noise suppression performance.
2. 100% Lead(Pb) & Halogen-Free and RoHS compliant.
3. High reliability -Reliability tests comply with AEC-Q200
4. Operating temperature -40~+125°C (Including self - temperature rise)

▣ **Ordering Code**

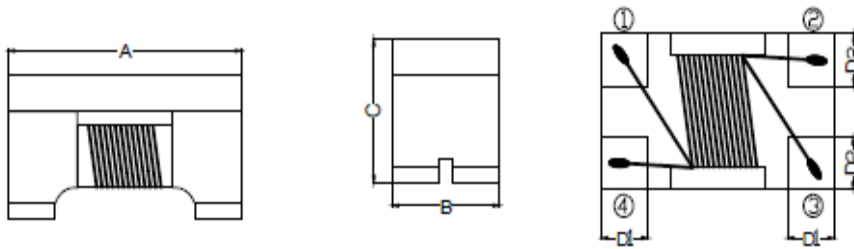
ECTA
32
P2
-
101
-
AS

①
②
③
④
⑤

① Series name	② Dimensions(mm)	③ Number of Lines
ECTA	32 : 3.3(L) × 2.5(W)	P2   2Lines
④ Inductance(μH)	⑤ Internal Code	
101   100	AS	

**▣ Shapes and Dimensions**

Unit: mm



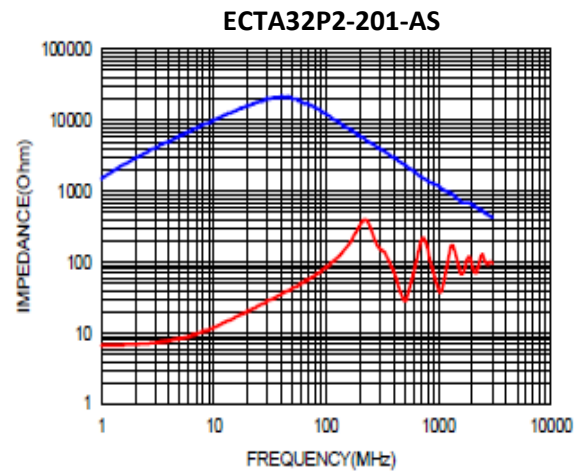
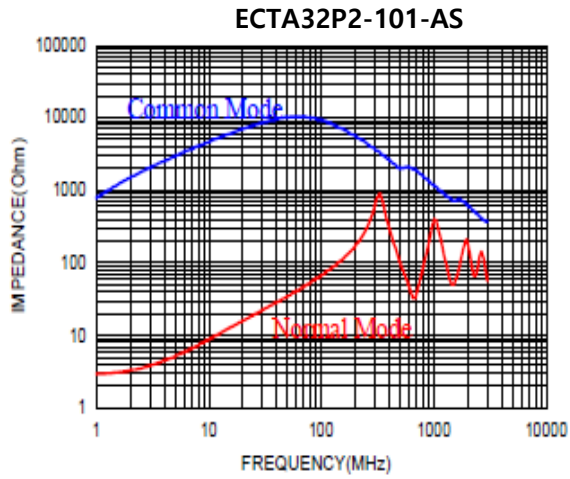
Series	A	B	C	D1	D2
ECTW32P2-AS	3.3±0.2	2.5±0.2	2.5 Max.	0.55±0.15	1.00±0.20

**▣ Electrical Characteristics**

Part Number	Inductance(μH) +50/-30%	DC Resistance (Ω) Max.	Rated Current (mA)	Rated Volt. (Vdc)	IR (MΩ) min
ECTA32P2-101-AS	100	1.5	150	80	10
ECTA32P2-201-AS	200	5.5	70	80	10

\* Test Frequency : Inductance 100kHz/0.1V

■ Typical Impedance v.s. Frequency Curve



■ Schematic Diagram

